



ICE HOUSE BUILDING
SINGLE TENANT STUDY



PROGRAM SUMMARY - 22,141 USF
205 PEOPLE / 108 SF/PERSON

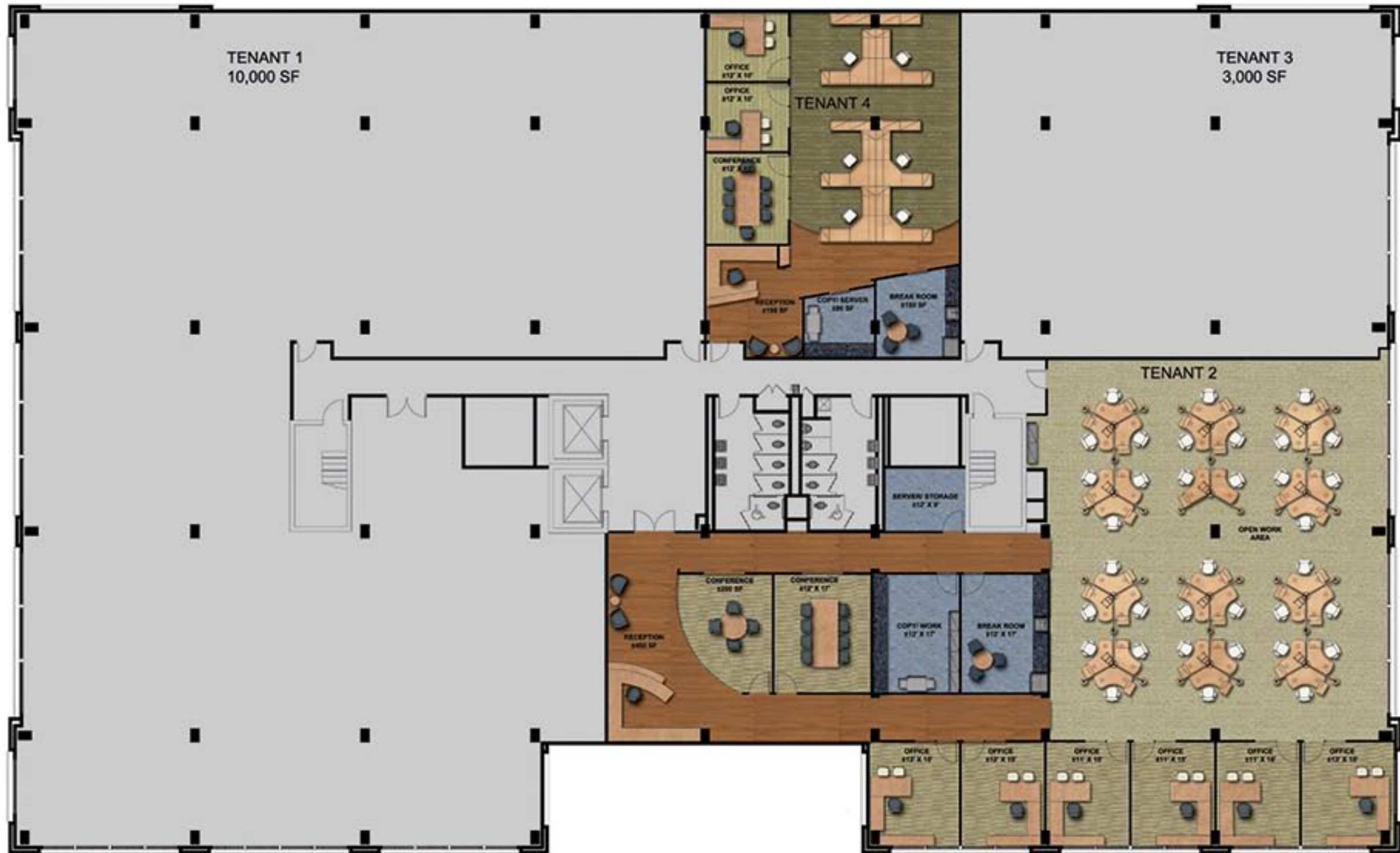
- (01) RECEPTION/WAITING
- (03) EXECUTIVE OFFICE
- (15) OFFICE
- (181) WORKSTATION
- (02) LG. CONFERENCE ROOM
- (03) CONFERENCE ROOM
- (02) CAFE/COFFEE
- (02) COPY ROOM
- (01) FILE

THE ORIGINAL
Rainier Brewery
Georgetown, WA

SABEY
CORPORATION



berger design | interior architecture



ICE HOUSE BUILDING
MULTI-TENANT STUDY

PROGRAM SUMMARY - TENANT 2 - 5,800 USF
44 PEOPLE / 132 SF/PERSON

- (01) RECEPTION/WAITING
- (06) OFFICE
- (35) WORKSTATION
- (01) LG. CONFERENCE ROOM
- (01) BREAK ROOM
- (01) COPY ROOM
- (01) SERVER

PROGRAM SUMMARY - TENANT 4 - 1,800 USF
10 PEOPLE / 180 SF/PERSON

- (01) RECEPTION/WAITING
- (02) OFFICE
- (06) WORKSTATION
- (01) CONFERENCE ROOM
- (01) BREAK ROOM
- (01) COPY ROOM

