

OFFICE AVAILABLE

Historic Cachet in a Cutting Edge Neighborhood



SPACE FEATURES

- High, vaulted ceilings
- Lots of natural light
- Exposed brick
- Marble accented floors
- Open floor plan
- Second floor balcony with wood rail
- Historic detailing
- 5549 square feet +

LOCATION FEATURES

- Generous parking
- Easy access to I-5 and Highways 99 & 509
- Walk to restaurants, clubs and shops
- Ideal for design or architectural firms, retail, advertising agencies, restaurants and more...

THE ORIGINAL RAINIER BREWERY GENERAL OFFICE

— 6010 Airport Way South, Seattle Washington —

Landmark building in dynamic Georgetown is now available for lease. Ease-of-access and 5 minutes to downtown Seattle make it the perfect location for a company looking to expand or move out of the pricey downtown hub. Creative businesses will thrive in the energetic and exciting atmosphere of this vibrant, historic urban area. Be part of the up-and-coming Georgetown district!

\$12-16 sq ft + expenses

IDEAL FOR SINGLE TENANT



SABEY
CORPORATION

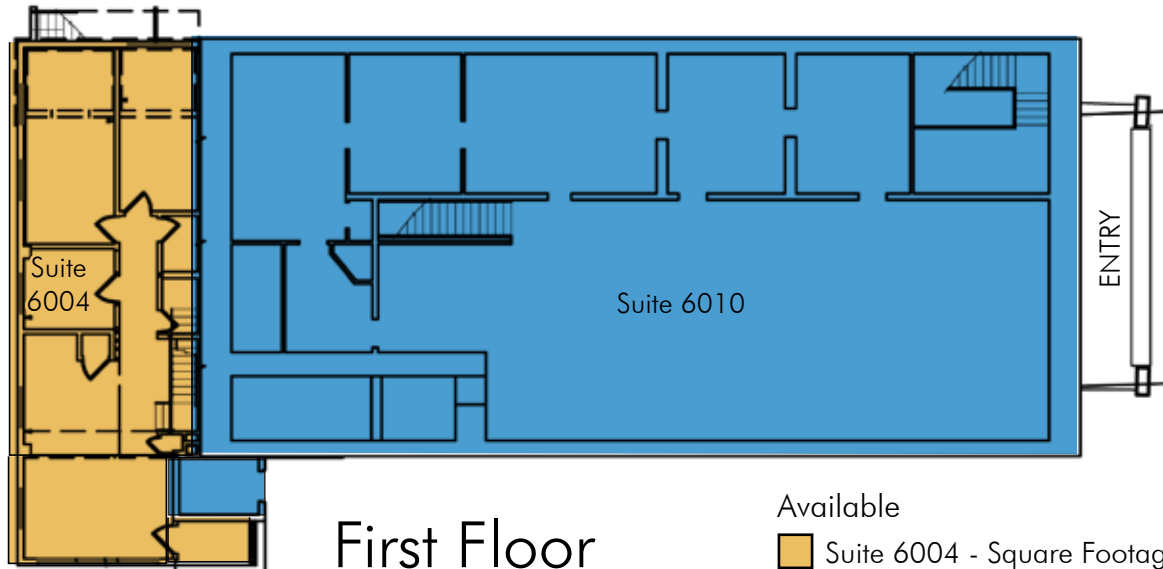
CONTACT INFORMATION

Mikel Hansen ▪ mikelh@sabey.com | Debbie Sabey ▪ debbies@sabey.com | 206.281.8700

12201 Tukwila International Blvd. | Fourth Floor | Seattle, Washington | WWW.SABEY.COM

THE ORIGINAL RAINIER BREWERY GENERAL OFFICE

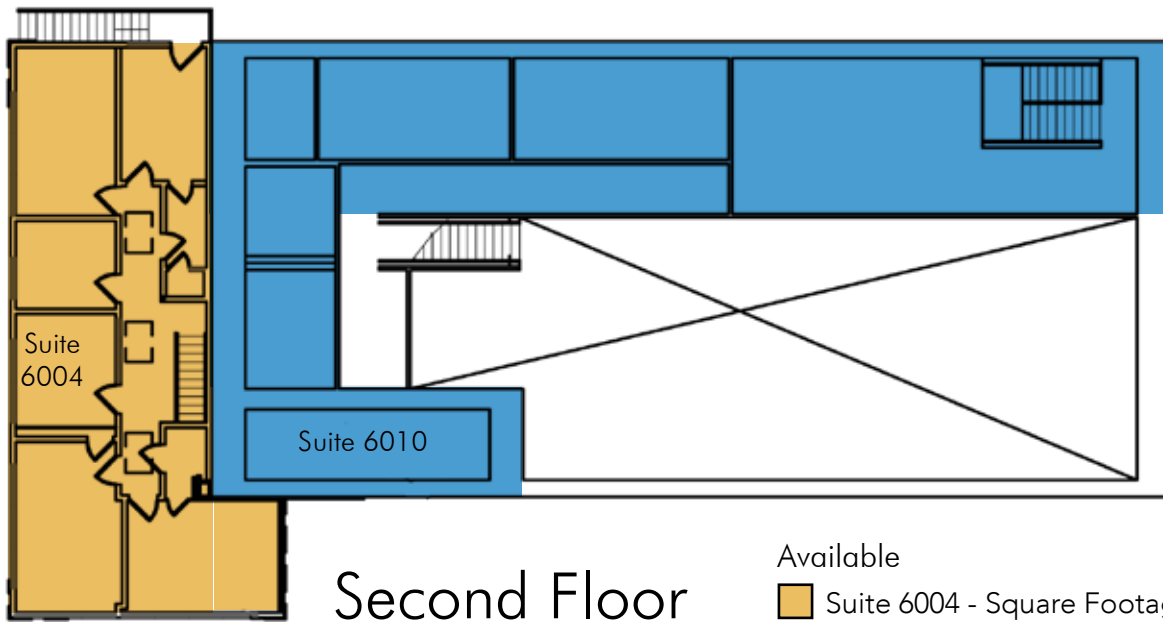
6010 Airport Way South, Seattle, Washington



Available

■ Suite 6004 - Square Footage: 1,077 usf

■ Suite 6010 - Square Footage: 3,670 usf



Available

■ Suite 6004 - Square Footage: 1,188 usf

■ Suite 6010 - Square Footage: 1,879 usf

CONTACT INFORMATION

Mikel Hansen ▪ mikelh@sabey.com | Debbie Sabey ▪ debbies@sabey.com | 206.281.8700

12201 Tukwila International Blvd. | Fourth Floor | Seattle, Washington 98168 | WWW.SABEY.COM

