

INTERGATE.WEST BLDG B & C

12201 & 12301 Tukwila International Blvd. Seattle, Washington 98168



HIGHLIGHTS

Large power capacity

Multiple fiber providers

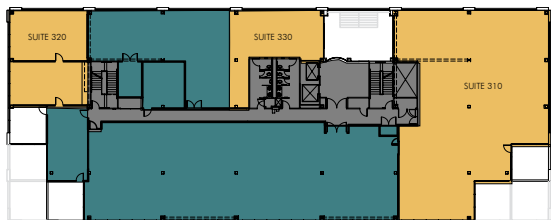
Floor loading suitable for data centers

Easy access to all major freeways

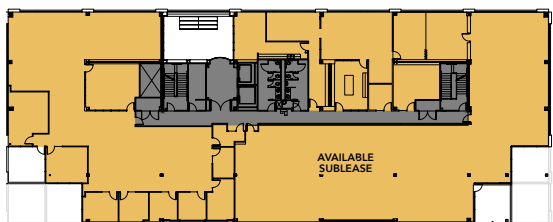
Friendly and professional property management

Views of downtown Seattle and Mount Rainier with private balconies on each floor

AVAILABLE SPACE



IGW B - Floor 3 - 7,537 rsf - data center



IGW C - Floor 3 - 7,374 rsf - office

Intergate.West is part of Intergate.Seattle, the largest privately owned multi-tenant data center campus on the West coast. Its robust electrical infrastructure, connectivity and floor loading make it an ideal location for data center operations while many features including spectacular views of downtown Seattle, Mount Rainier and the Cascade Mountains, private decks, ample parking – both covered and open-air - make it an attractive office location.

Intergate.West provides excellent access to I-5, I-405, Hwy 99, SR-599 and East Marginal Way. Sea-Tac International Airport is only 3 miles away; Boeing Field is even closer. Downtown Seattle is a mere 12 minute drive from the site. This location also offers quick access to a wide variety of shopping, dining and recreation opportunities in the surrounding area.



INTERGATE.WEST BLDG B & C

Surrounding Amenities

MAJOR FREEWAYS & TRANSPORTATION

- 1 Hwy 99
- 2 I-5
- 3 405

RESTAURANTS

- 4 Gordy's BBQ 1.3 miles
- 5 Pizza Hut 1.6 miles
- 6 Kentucky Fried Chicken 1.8 miles
- 7 McDonalds 1.9 miles
- 8 Ezell's Chicken 1.9 miles
- 9 Red Robin Gourmet Burgers 3.5 miles
- 10 Mali Thai Cuisine 3.4 miles
- 11 Stanford's Restaurant & Bar 3.5 miles

HOTELS

- 12 Ramada Limited 1.2 miles
- 13 Radisson Hotel Gateway 3.7 miles
- 14 Cedarbrook Center 4.0 miles

SHOPPING & SIGHT SEEING

- 15 Starbucks Coffee 0.7 miles
- 16 Rainier Golf and Country Club 1.0 miles
- 17 Foster Golf Links 1.6 miles
- 18 Sea-Tac Airport 1.6 miles
- 19 Safeway 2.7 miles
- 20 Westfield ShoppingTown 2.8 miles
- 21 Wal-Mart 3.2 miles
- 22 Costco 3.7 miles

